

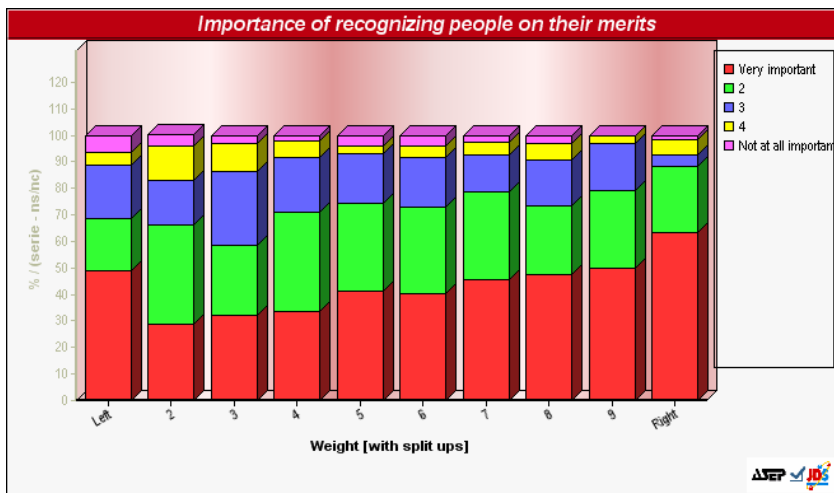
## Figure World Value Survey

### WVS 1

In order to be considered "just", what should a society provide? Please tell me for each statement if it is important or unimportant to you. 1 means very important; 5 means not important at all.

#### Recognising people on their merits

- 1 Very important
- 2
- 3
- 4
- 5 Not at all important

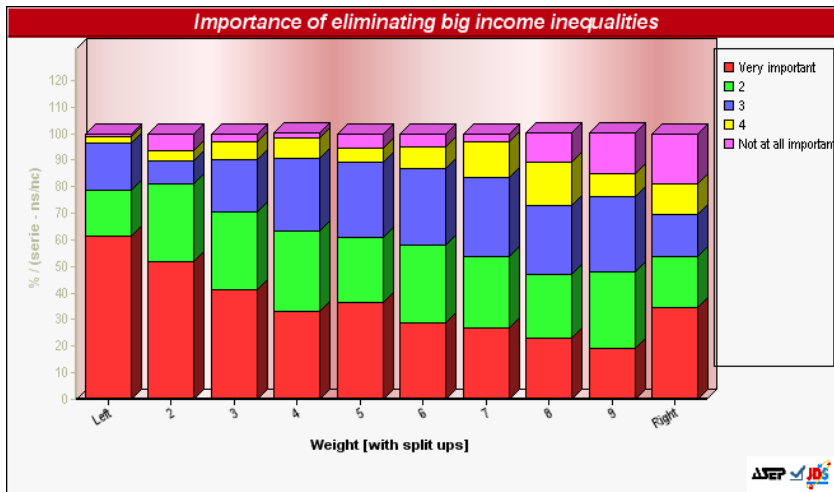


## WVS 2

In order to be considered "just", what should a society provide? Please tell me for each statement if it is important or unimportant to you. 1 means very important; 5 means not important at all.

Eliminating big inequalities in income between citizens

- 1 Very important
- 2
- 3
- 4
- 5 Not at all important

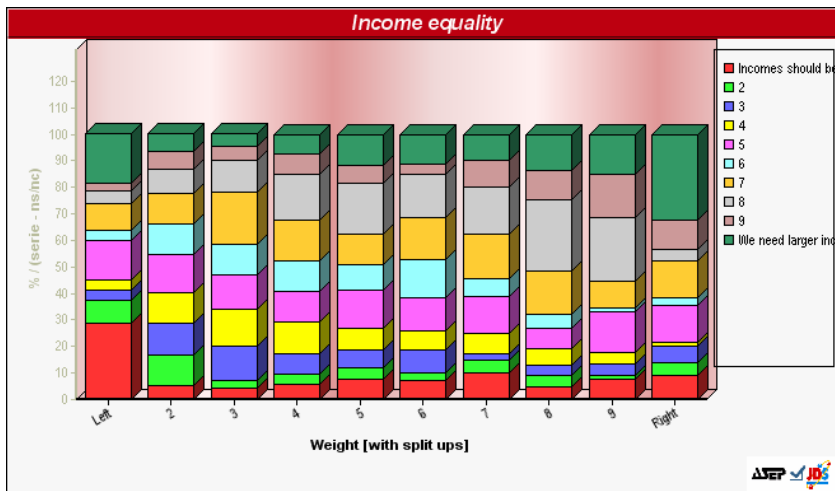


### WVS 3

Now I'd like you to tell me your views on various issues. How would you place your views on this scale? 1 means you agree completely with the statement on the left; 10 means you agree completely with the statement on the right; and if your views fall somewhere in between, you can choose any number in between. Sentences:

Incomes should be made more equal vs We need larger income differences as incentives

- 1 Incomes should be made more equal
- 2
- 3
- 4
- 5
- 6
- 7
- 8
- 9
- 10 We need larger income differences as incentives

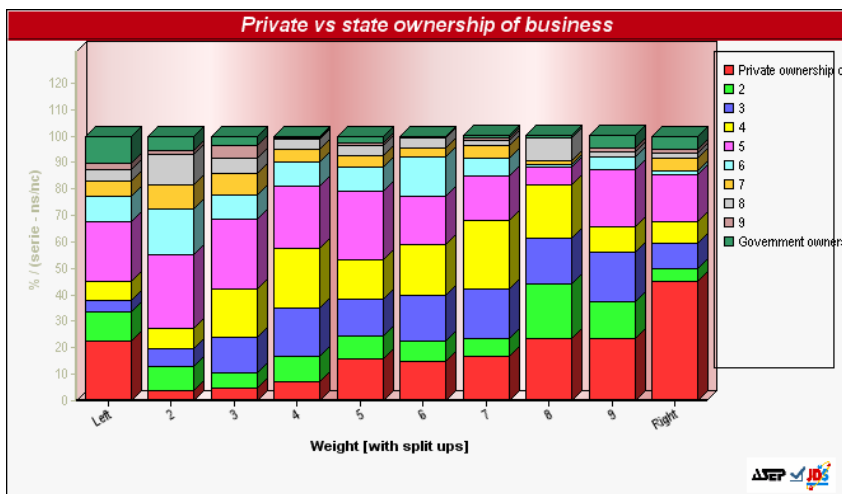


## WVS 4

Now I'd like you to tell me your views on various issues. How would you place your views on this scale? 1 means you agree completely with the statement on the left; 10 means you agree completely with the statement on the right; and if your views fall somewhere in between, you can choose any number in between. Sentences:

Private ownership of business should be increased vs Government ownership of business should be increased

- 1 Private ownership of business should be increased
- 2
- 3
- 4
- 5
- 6
- 7
- 8
- 9
- 10 Government ownership of business should be increased



## WVS 5

Now I'd like you to tell me your views on various issues. How would you place your views on this scale? 1 means you agree completely with the statement on the left; 10 means you agree completely with the statement on the right; and if your views fall somewhere in between, you can choose any number in between. Sentences:

Competition is good. It stimulates people to work hard and develop new ideas vs  
Competition is harmful. It brings the worst in people

- 1 Competition is good
- 2
- 3
- 4
- 5
- 6
- 7
- 8
- 9
- 10 Competition is harmful

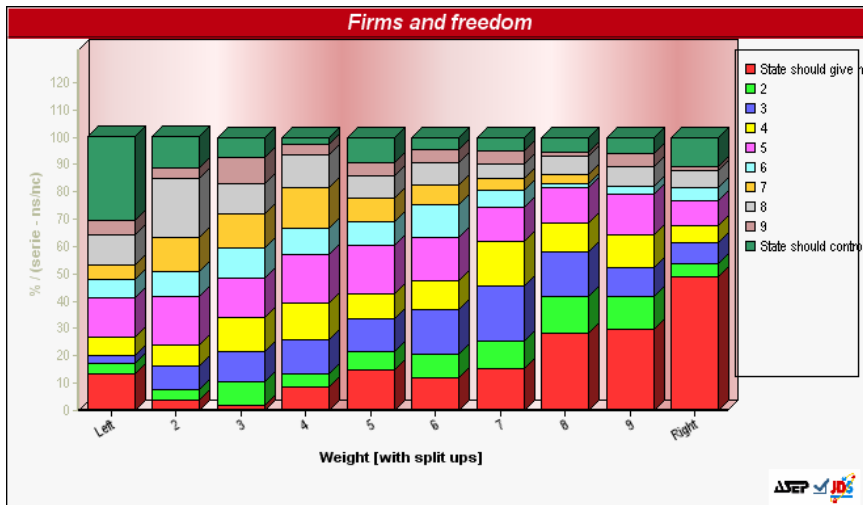


## WVS 6

Now I'd like you to tell me your views on various issues. How would you place your views on this scale? 1 means you agree completely with the statement on the left; 10 means you agree completely with the statement on the right; and if your views fall somewhere in between, you can choose any number in between. Sentences:

The state should give more freedom to firms vs The state should control firms more effectively

- 1 State should give more freedom to firms
- 2
- 3
- 4
- 5
- 6
- 7
- 8
- 9
- 10 State should control firms more effectively



## WVS 7

Which of these two statements comes closest to your own opinion?

A. I find that both freedom and equality are important. But if I were to choose one or the other, I would consider personal freedom more important, that is, everyone can live in freedom and develop without hinderance

B. Certainly both freedom and equality are important. But if I were to choose one or the other, I would consider equality more important, that is, that nobody is underprivileged and that social class differences are not so strong.

- 1 Freedom above equality
- 2 Equality above freedom
- 3 Neither

